



PEDESTRIAN SAFETY ACTION PLAN

July 20, 2022 Update

Plan Development



Context
Guide



Pedestrian
Safety
Action Plan



Toolkit



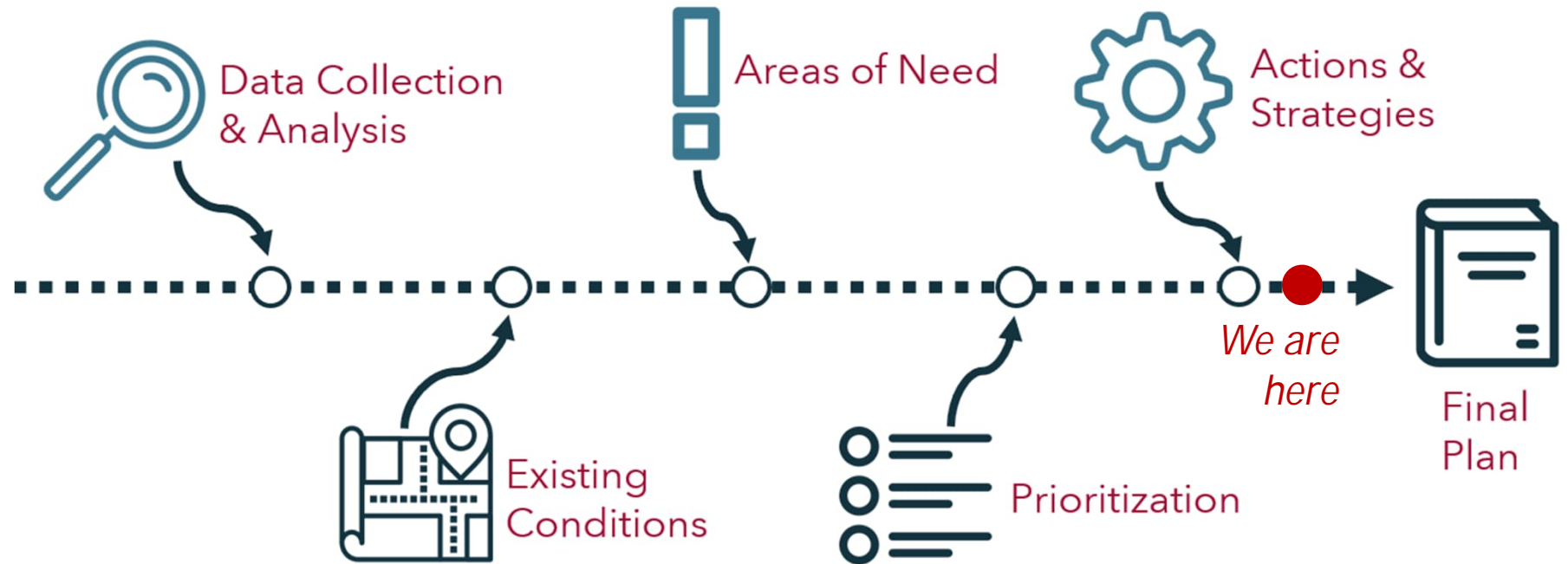
Case
Studies



Web Portal



Training



Chapter 5 – Actions and Strategies



Context
Guide



Pedestrian
Safety
Action Plan



Toolkit



Case
Studies



Web Portal



Training

EDUCATE

the public

Safety awareness for all roadway users is critical to the reduction of crashes. Some new pedestrian and bicycle safety infrastructure will be unfamiliar, and changes to the built environment may need to be consciously introduced to all roadway users. Education will explain what the safety improvements are, how to use them, and how they will make us all safer; this in turn will increase compliance with and support for the countermeasures.

Conduct annual safety campaign: billboards, Pedestrian Safety Audits, etc.

TBUs	Partners	Timing	Goals/Objectives
SHA, MVA, MTA, MDTA, MHSO	County and jurisdictional DOTs	Recurring	Goal 2, Objectives 1-4

Pair implementation of countermeasures with education, partnering with MHSO

TBUs	Partners	Timing	Goals/Objectives
SHA, MVA, MTA, MDTA, MHSO	—	Recurring	Goal 2, Objectives 1-4

Review driver education materials to teach new drivers how to interact with new types of facilities (e.g., HAWK, bike lane, bike boxes, road diet)

TBUs	Partners	Timing	Goals/Objectives
SHA, MVA, MTA, MDTA	County and jurisdictional DOTs	Recurring	Goal 2, Objectives 1-4

126

MAINTAIN

infrastructure investments

PEDESTRIAN SAFETY ACTION PLAN | 2022

The benefit of new infrastructure investments should be maximized by keeping the infrastructure functioning in optimum condition. This requires understanding what the maintenance needs are, as new infrastructure may have new and different maintenance needs, both in terms of activities, such as plowing bike paths, and materials.

Ensure Context Driven treatments can be maintained

Action Level 2 Maintain adequate inventory of materials (e.g., flexible delineators, signals, Rectangular Rapid Flashing Beacons)

TBUs	Partners	Timing	Goals/Objectives
SHA, MDTA, MTA	County and jurisdictional DOTs	Continuous	Goal 3, Objectives 1-3

Ensure appropriate maintenance equipment is available (e.g., to clear bike paths of debris or snow; correct equipment to replace/repair elements)

TBUs	Partners	Timing	Goals/Objectives
SHA, MDTA, MTA	County and jurisdictional DOTs	Continuous	Goal 3, Objectives 1-3

Budget adequately for maintenance

TBUs	Partners	Timing	Goals/Objectives
SHA, MDTA, MTA	County and jurisdictional DOTs	Continuous	Goal 3, Objectives 1-3

127

Chapter 5 – Actions and Strategies



Context
Guide



Pedestrian
Safety
Action Plan



Toolkit



Case
Studies



Web Portal



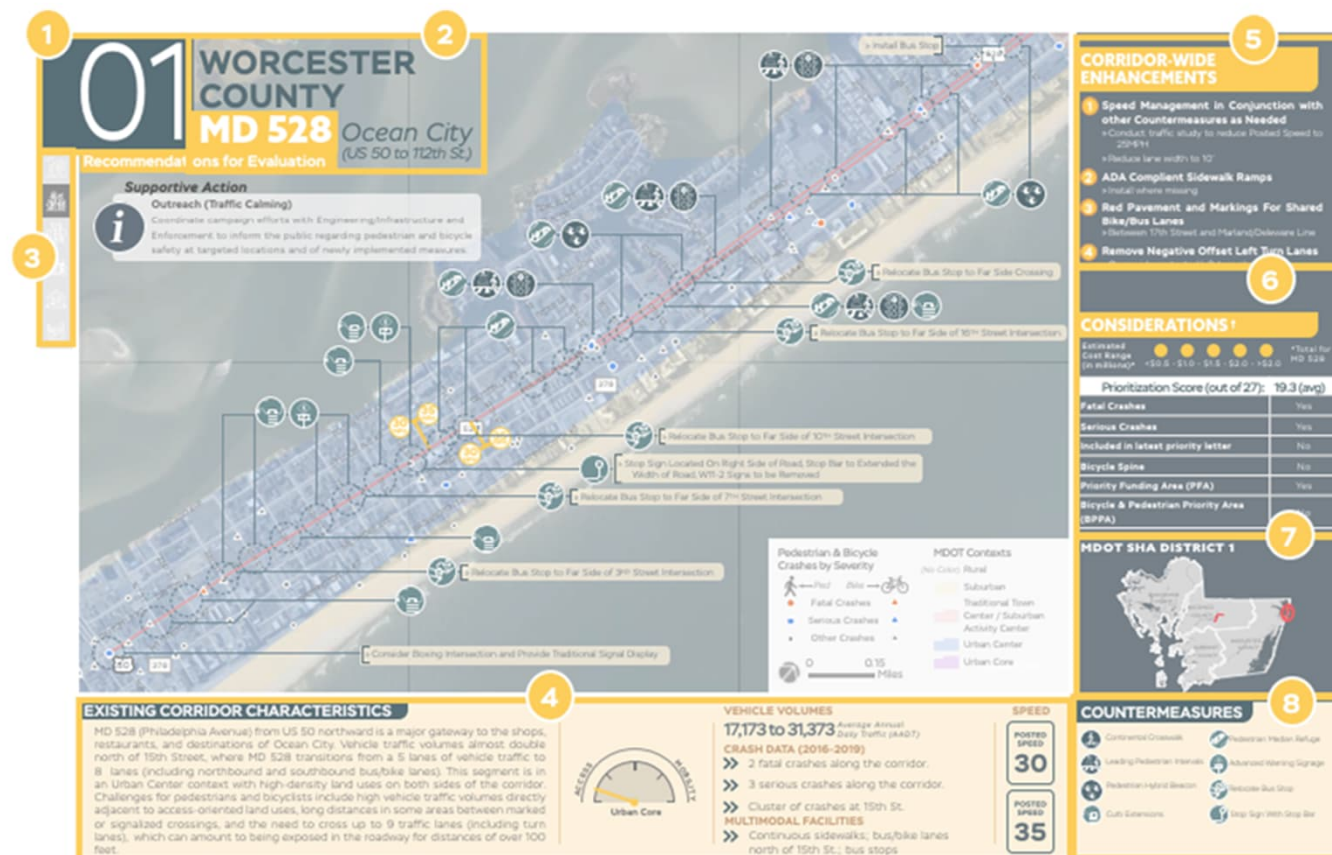
Training

Project CUT SHEETS

How to read the cut sheets

The cut sheets on the following pages provide recommended pedestrian and bicycle "countermeasures" (or physical roadway improvements) for each of the selected priority corridors listed in Table 5.3. This section is a guide to reading and interpreting those cut sheets.

- Corridor Number:** Sequential number that identifies the cut sheet (one number per corridor).
- Corridor Info:** Provides the route number of the corridor, as well as the county and municipality(ies) or Census-designated place(s) where the corridor is located.
- Context(s):** Highlights the appropriate MDOT-identified context in dark gray. Context(s) are also shown in the map legend and the "dashboard" icons in item 4.
- Existing Corridor Characteristics:** Corridor characteristics including crash data, vehicle traffic volumes, multimodal facilities, posted speed limits, and pedestrian/bicycle challenges.
- Corridor-Wide Enhancements:** Describes improvements that are recommended for the entire corridor.
- Considerations:** This section lists factors that could impact the implementation of each cut sheet.
- Locator Map:** A small map that identifies where the corridor is located in its county and MDOT SHA district.
- Countermeasures:** This legend identifies the icons showing recommended countermeasures on the map. Dark blue icons are countermeasures included in the current version of the *Context Driven Toolkit*, while countermeasures in light blue are new and/or have not yet been added to the *Context Driven Toolkit*.



Public Outreach – Spring 2021



Context
Guide



Pedestrian
Safety
Action Plan



Toolkit



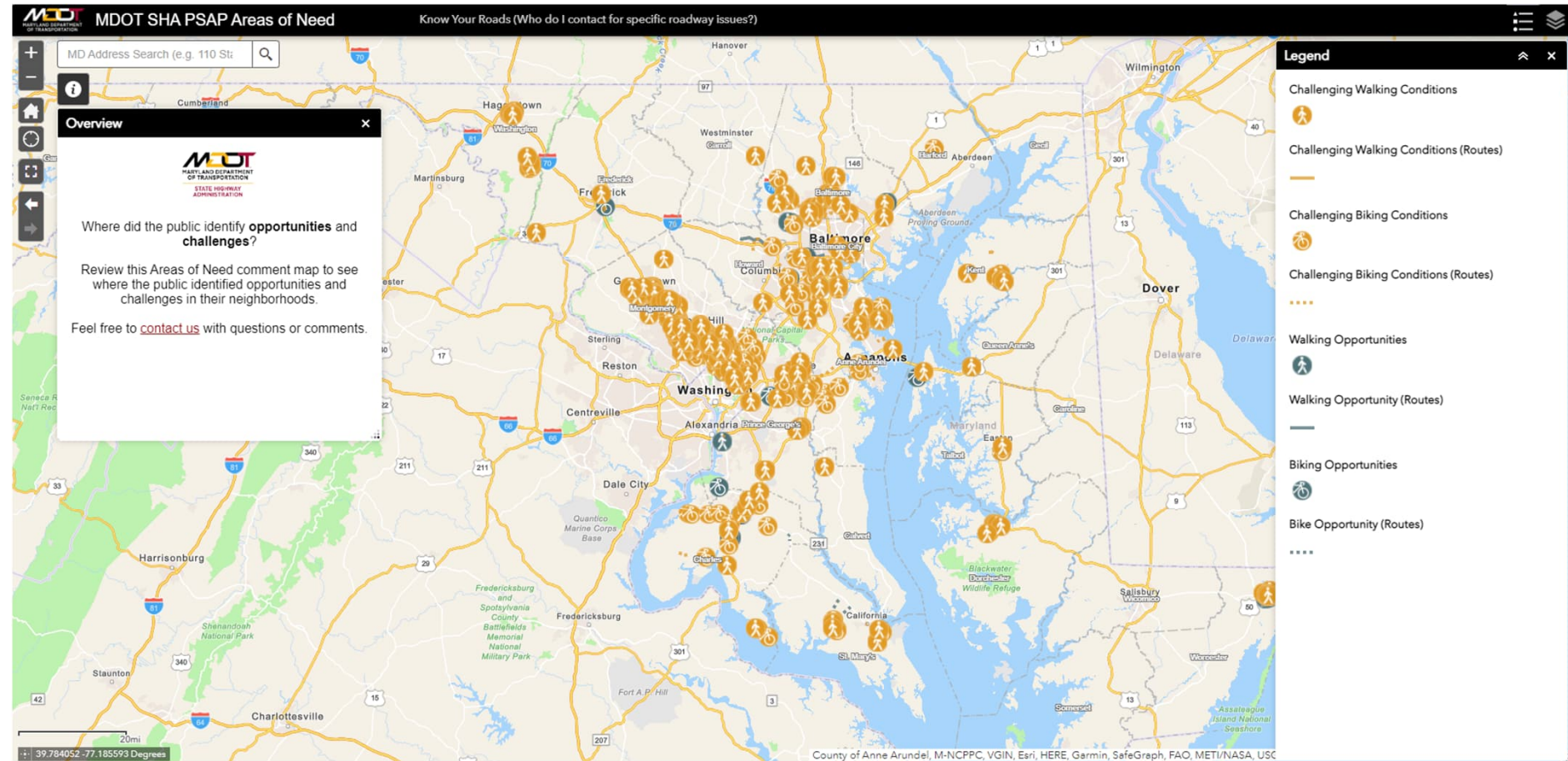
Case
Studies



Web Portal



Training



Public Outreach – Winter 2021



Context Guide



Pedestrian Safety Action Plan



Toolkit



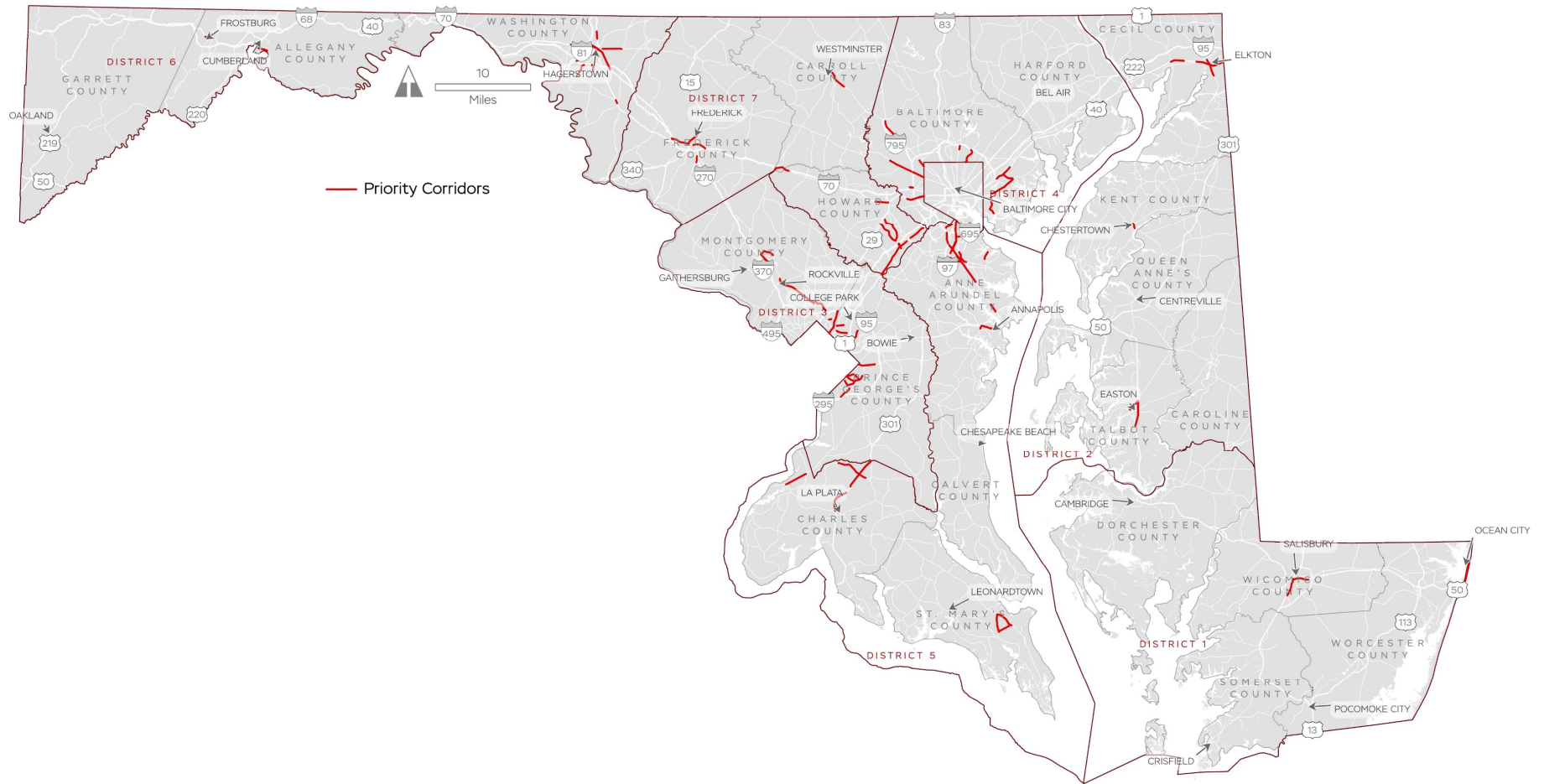
Case Studies



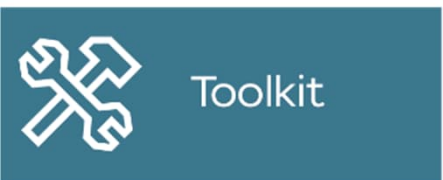
Web Portal



Training



Contact and Information



MDOT State Highway Administration
SHAContextGuide@mdot.maryland.gov

Kandese Holford

Bicycle & Pedestrian Coordinator, MDOT SHA
kholford@mdot.maryland.gov

More Information:

roads.maryland.gov/contextdriven
roads.maryland.gov/psap
roads.maryland.gov/toolkit