



2023-2026 TIP Amendment: MDOT SHA Projects

December 2022



MDOT SHA Projects



Amendment Purpose

- Add 8 new projects to the FY 2023-2026 TIP
 - 7 new projects
 - 1 existing project currently on hold
 - Funding needed for planning and design



MDOT SHA Projects



TSMO System 1

- Combination of information technology and geometric improvements within MDOT SHA's TSMO System 1
- Project will improve safety and operations within TSMO System 1 including I-70, US 40 and US 29 in Howard and Baltimore counties



MDOT SHA Projects



TSMO System 1

- Requesting \$234,000 in planning funding and \$2 million in design funding
 - Funding will take project to 30% design milestone



MDOT SHA projects



I-97: US 50 to MD 32 TSMO

- Combination of information technology and geometric improvements along I-97 between US 50 and MD 32
- Project will improve safety and operations in this heavily traveled corridor



MDOT SHA projects



I-97: US 50 to MD 32 TSMO

- Requesting \$3.9 million in design funding
 - Funding will take project to 30% design milestone

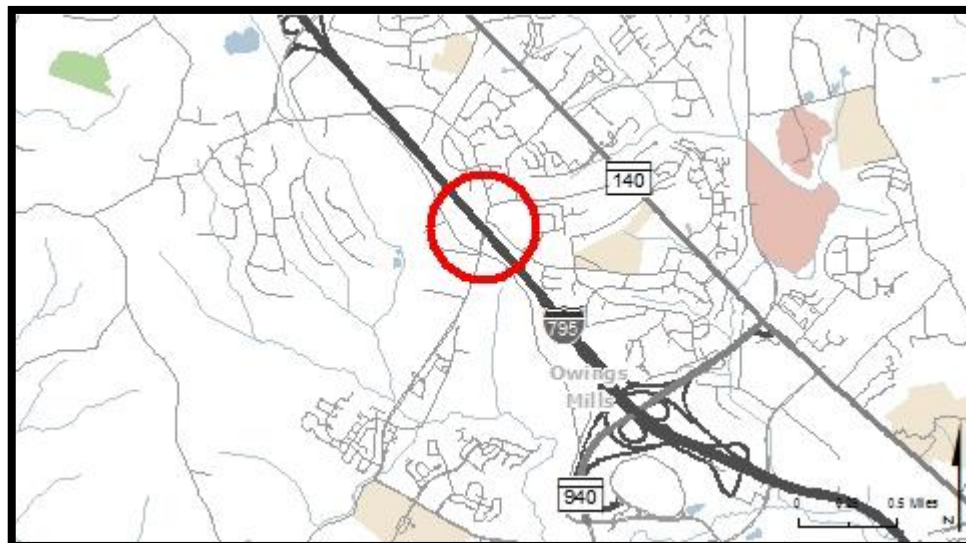


MDOT SHA Projects



I-795: Dolfield Boulevard Interchange

- Construct a new interchange at Dolfield Boulevard including widening and operational improvements between Owings Mills Boulevard and Franklin Boulevard
- Project will provide improved access to planned growth along Red Run Boulevard in the Owings Mills area



MDOT SHA projects



I-795: Dolfield Boulevard Interchange

- Requesting \$5 million in design funding
 - Funding will take project to 30% design milestone

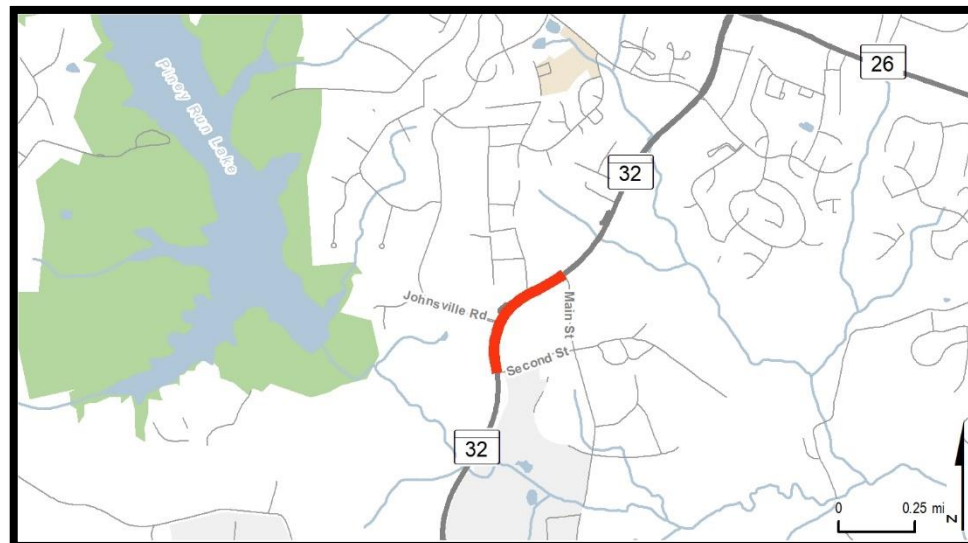


MDOT SHA projects



MD 32: 2nd Street to Main Street

- Improve intersection geometry, extend turn lanes, and modify access along MD 32 (Sykesville Road)
- Project will improve operations and safety along MD 32



MDOT SHA projects



MD 32: 2nd Street to Main Street

- Requesting \$900,000 to advance design
 - Funding will complete design

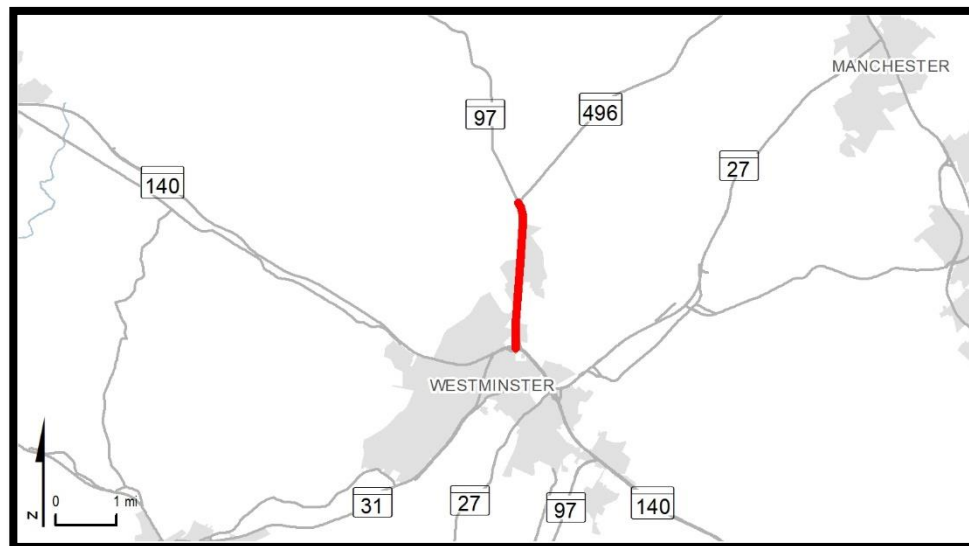


MDOT SHA projects



MD 97: MD 140 to MD 496 Corridor Study

- Planning Study to identify multi-modal transportation needs and develop needed conceptual safety and capacity improvements
- Roadway provides direct access to the Carroll County Regional Airport, industrial parks, and growing economic development opportunities



MDOT SHA projects



MD 97: MD 140 to MD 496 Corridor Study

- Requesting \$500,000 in planning funding

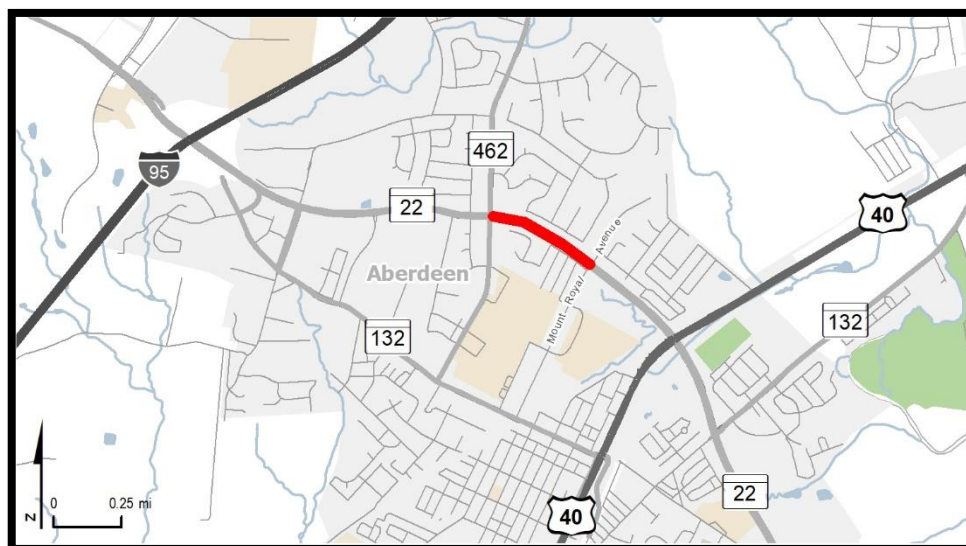


MDOT SHA Projects



MD 22: MD 462 to Mount Royal Avenue Noise Abatement

- Extend existing noise barriers along both sides of MD 22
- Type 1 noise abatement project needed to mitigate impacts associated with BRAC improvement projects



MDOT SHA Projects



MD 22: MD 462 to Mount Royal Avenue Noise Abatement

- Requesting \$1.5 million in design funding
 - Funding will complete design

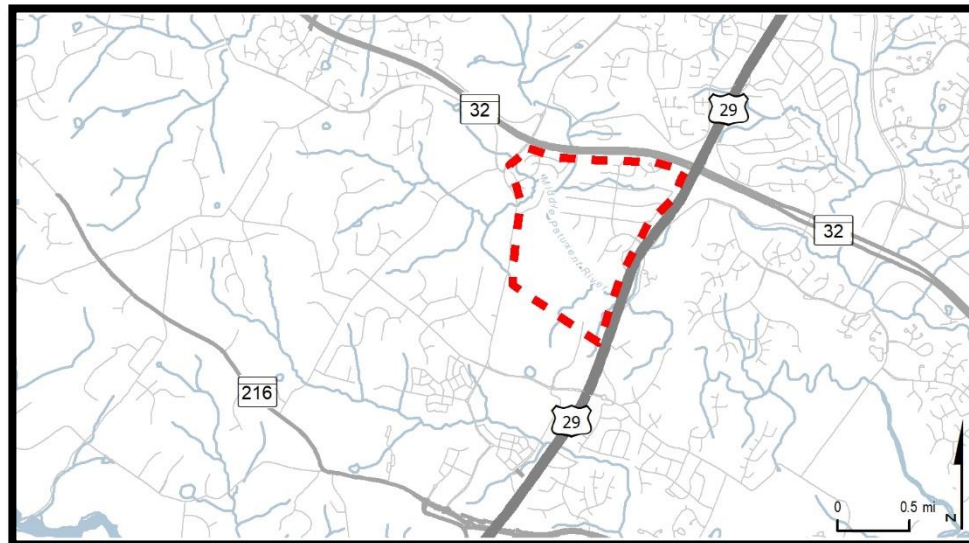


MDOT SHA Projects



US 29: Johns Hopkins Road to MD 32 Bicycle - Pedestrian Route

- Trail design to connect the Rivers Edge community to points west
- Project will provide safe bicycle and pedestrian connectivity to surrounding areas

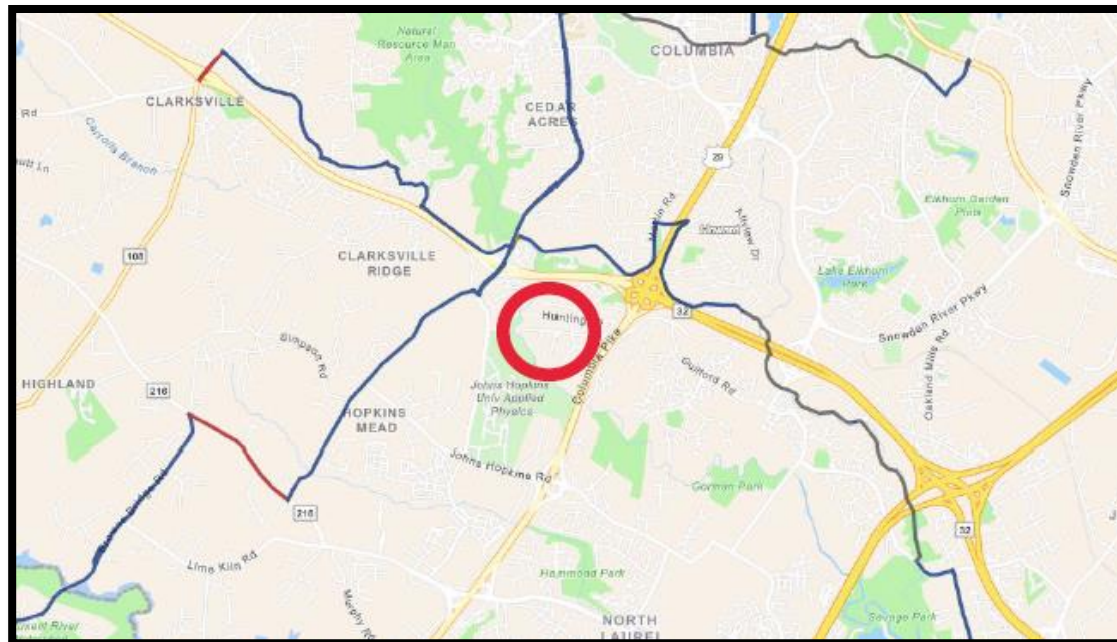


MDOT SHA Projects



US 29: Johns Hopkins Road to MD 32 Bicycle - Pedestrian Route

- Requesting \$500,000 in design funding

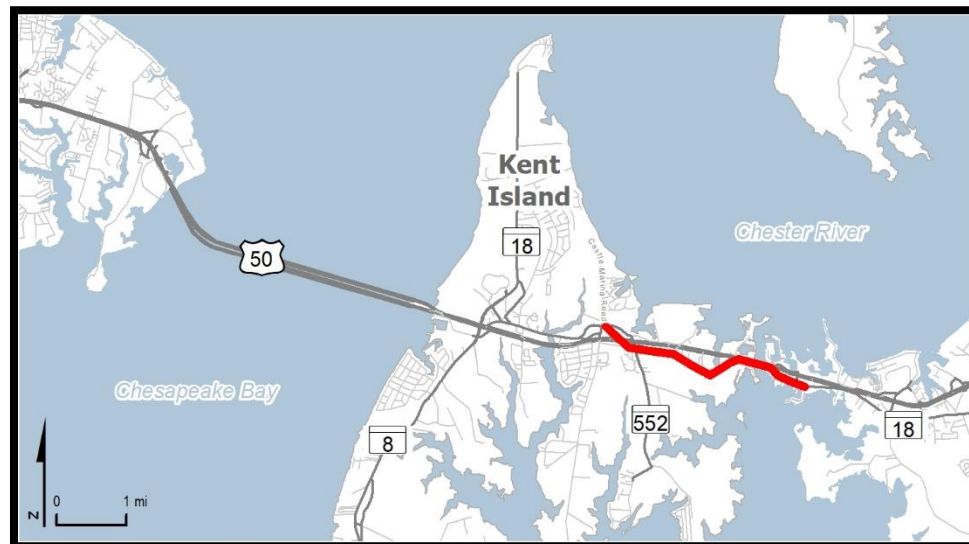


MDOT SHA Projects



MD 18B: Castle Marina Drive to the Kent Narrows Corridor Study

- Planning study to identify multi-modal transportation needs and develop conceptual capacity and multi-modal improvements
- Roadway serves as ad hoc route for regional traffic bypassing queues on US 50

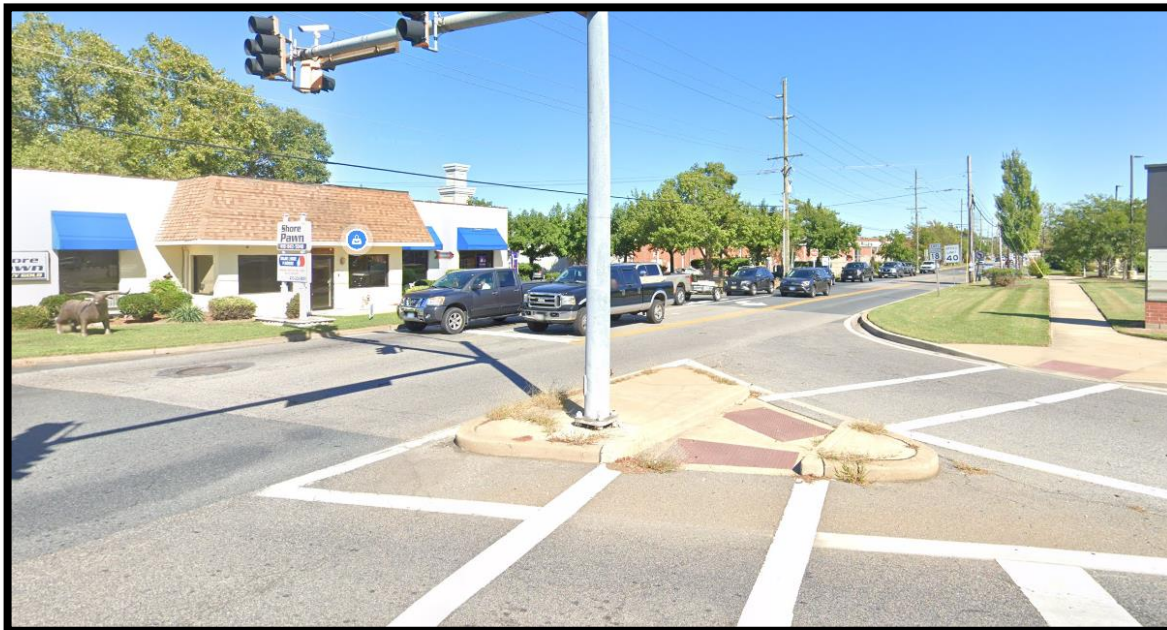


MDOT SHA Projects



MD 18B: Castle Marina Drive to the Kent Narrows Corridor Study

- Requesting \$500,000 in planning funding



Page 10 of 10

410-545-5550 | lminnick@mdot.maryland.gov

