

SHRP2 C20 – Maryland

Freight Modeling System Review

March 29, 2018



STATE HIGHWAY
ADMINISTRATION



**BALTIMORE
METROPOLITAN
COUNCIL**



Overview

- **Project Goal**

- Replace 2001 Truck Model in BMC Travel Demand Model with multimodal Freight Modeling System (FMS)
- Use existing data sources and model components for quick implementation
- Engage freight stakeholders throughout the process

- **Project Status**

- Working model delivered in January 2018
- BMC and MDOT SHA reviewing the FMS
- Seeking feedback and application suggestions



Model Input Data

- **Business Data**

- Establishment Survey: 2003 Ohio Statewide General Establishment Survey
- Logistics Nodes: Intermodal facilities, warehouses and distribution center locations / [Leonard's Guide](#), [Bureau of Transportation Statistics](#) (BTS), [Center for Transportation Analysis](#) (CTA) & Maryland county planning departments
- Employment: [Longitudinal Employer-Household Dynamics](#) (LEHD) / US Census

- **Freight Flow Data**

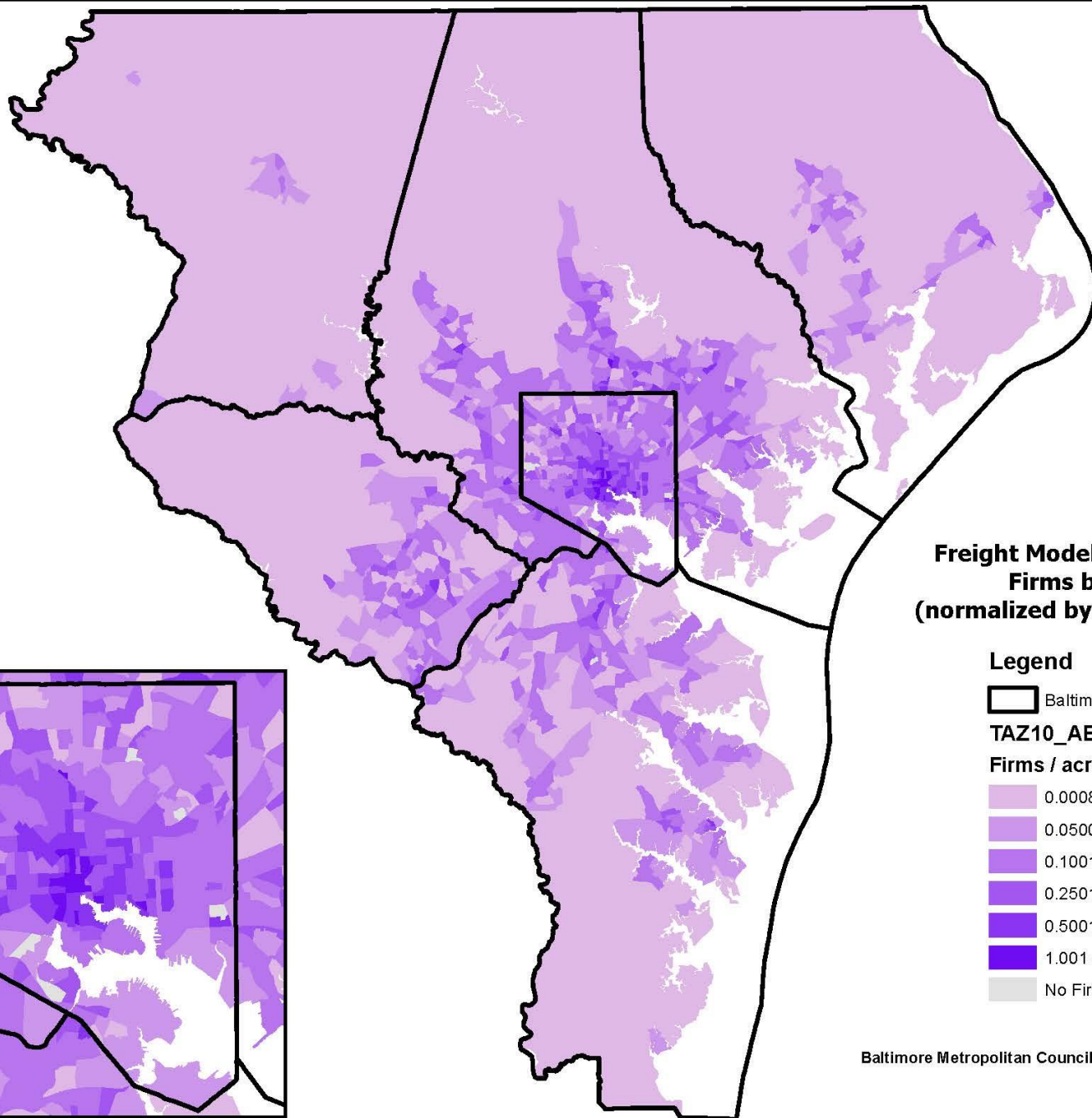
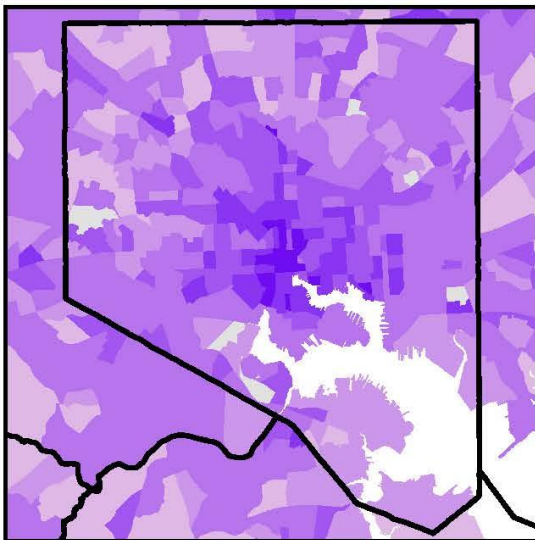
- Goods Movement: 2012 [Freight Analysis Framework](#) (FAF) / FHWA & BTS

- **Modal Data**

- Truck - Traffic Counts: [SHA](#), [MdTA](#) & [BMC](#)
- Truck - GPS: [American Transportation Research Institute](#) (ATRI)
- Port: 2012 State and Port Cargo Movement Data / US Army Corps of Engineers
- Air: 2012 Air Freight Data ([T100](#)) / BTS



Baltimore City




**Freight Modeling System:
Firms by TAZ
(normalized by TAZ acreage)**


Legend

 Baltimore Region


TAZ10_ABM

Firms / acres

 0.0008698 - 0.05000

 0.05001 - 0.1000

 0.1001 - 0.2500

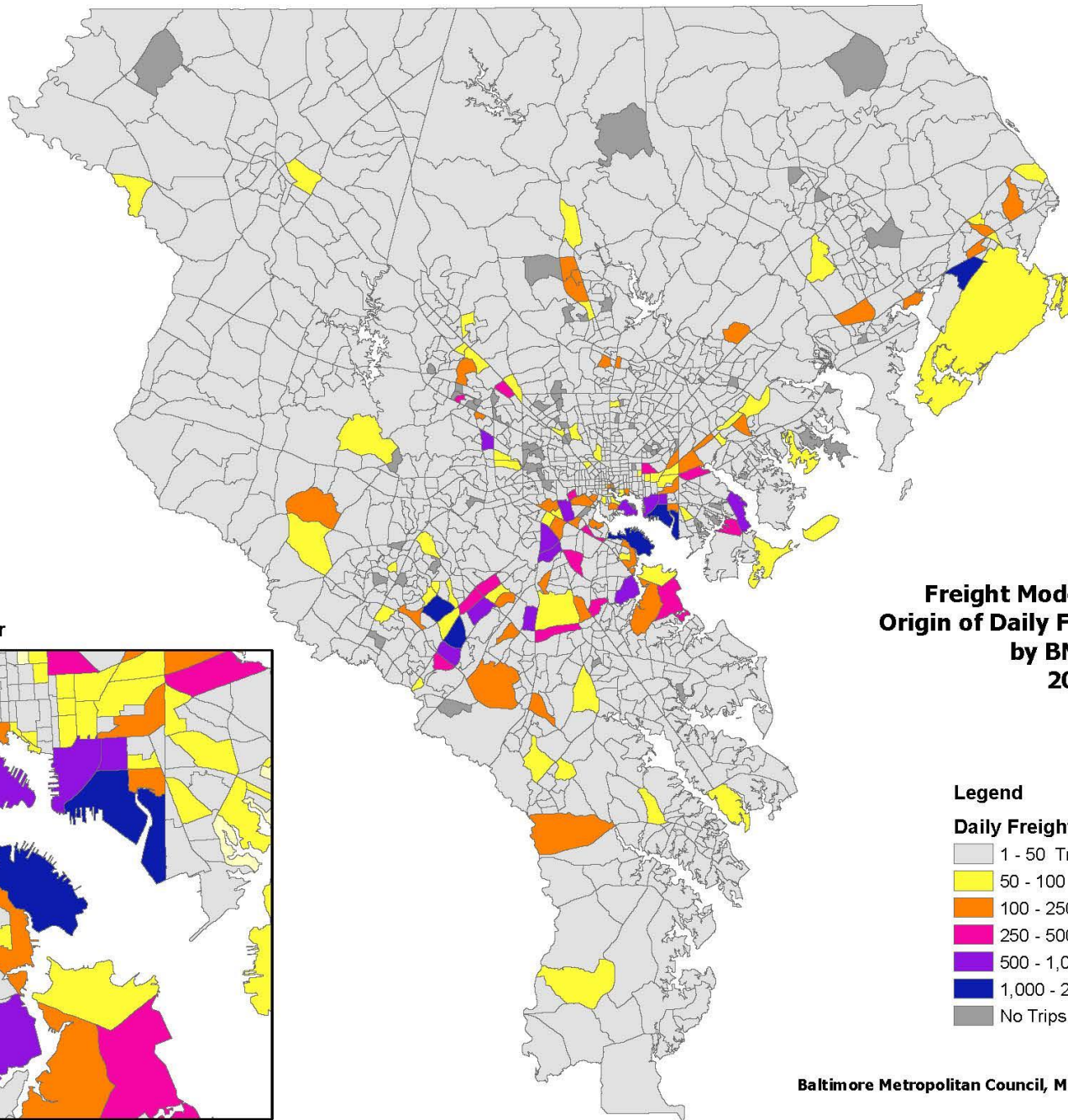
 0.2501 - 0.5000

 0.5001 - 1.000

 1.001 - 4.474

 No Firms

Baltimore Metropolitan Council, March 2018



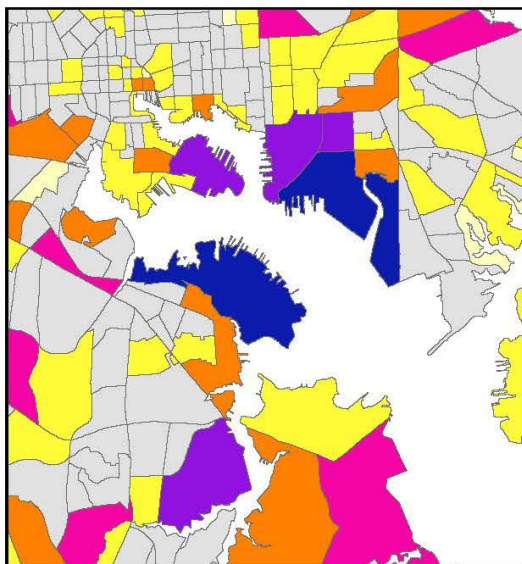
**Freight Modeling System:
Origin of Daily Freight Truck Trips
by BMC TAZ
2012**

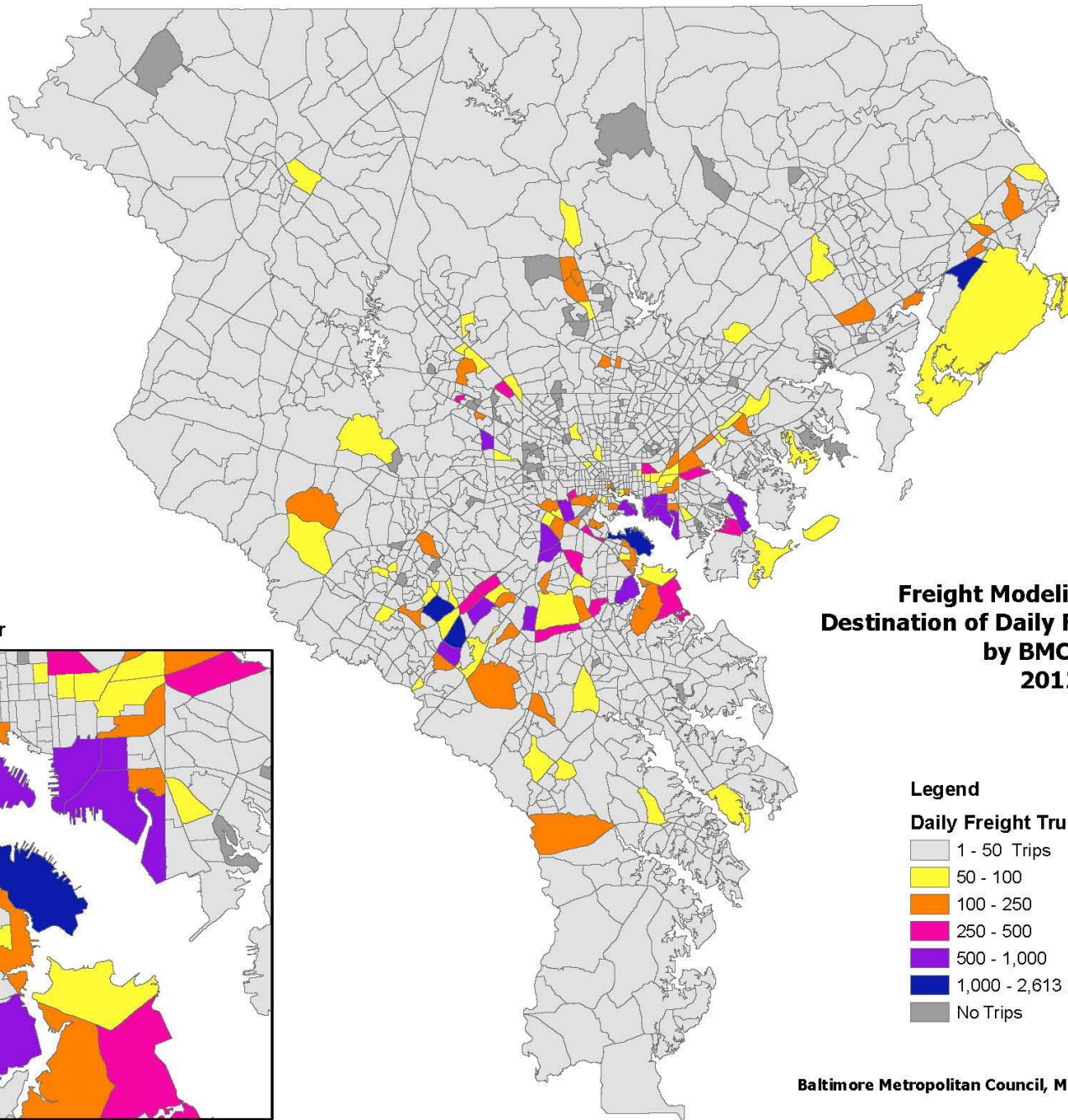
Legend

Daily Freight Truck Trip Origins



Baltimore Harbor





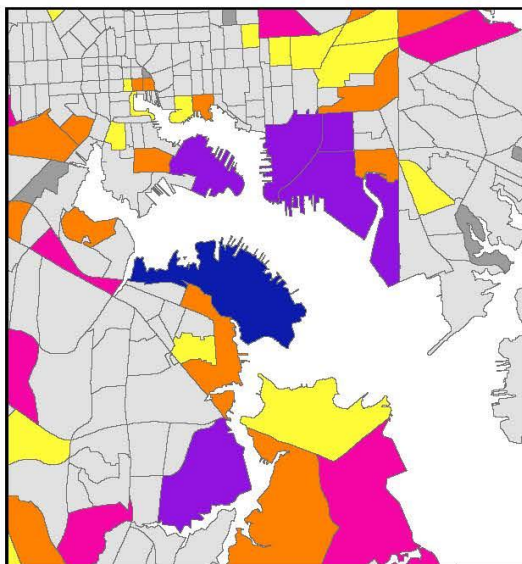
**Freight Modeling System:
Destination of Daily Freight Truck Trips
by BMC TAZ
2012**

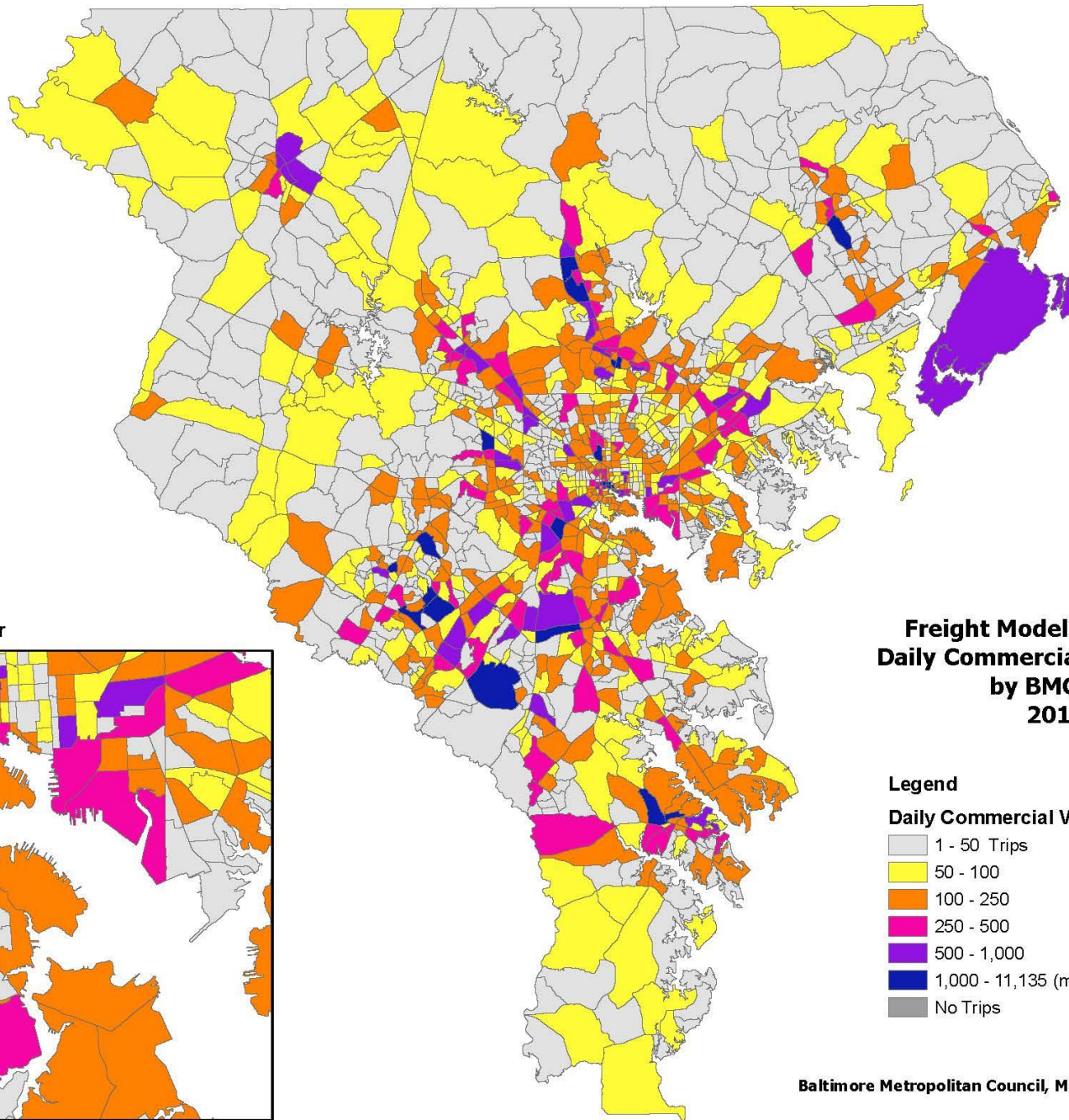
Legend

Daily Freight Truck Trip Destinations

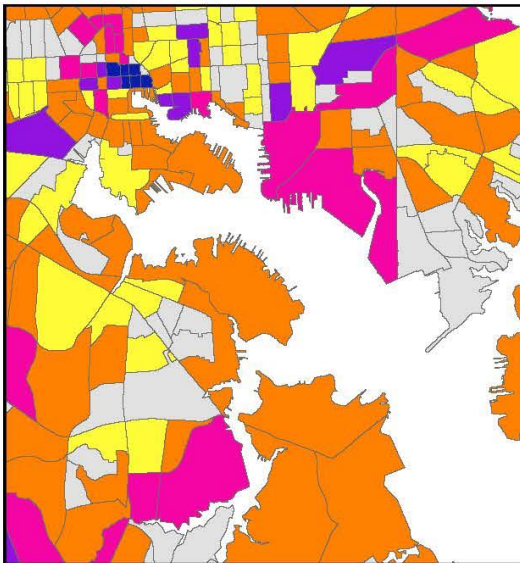
- 1 - 50 Trips
- 50 - 100
- 100 - 250
- 250 - 500
- 500 - 1,000
- 1,000 - 2,613 (max.)
- No Trips

Baltimore Harbor





Baltimore Harbor



**Freight Modeling System:
Daily Commercial Vehicle Trips
by BMC TAZ
2012**

Legend

Daily Commercial Vehicle Origins

- 1 - 50 Trips
- 50 - 100
- 100 - 250
- 250 - 500
- 500 - 1,000
- 1,000 - 11,135 (max.)
- No Trips

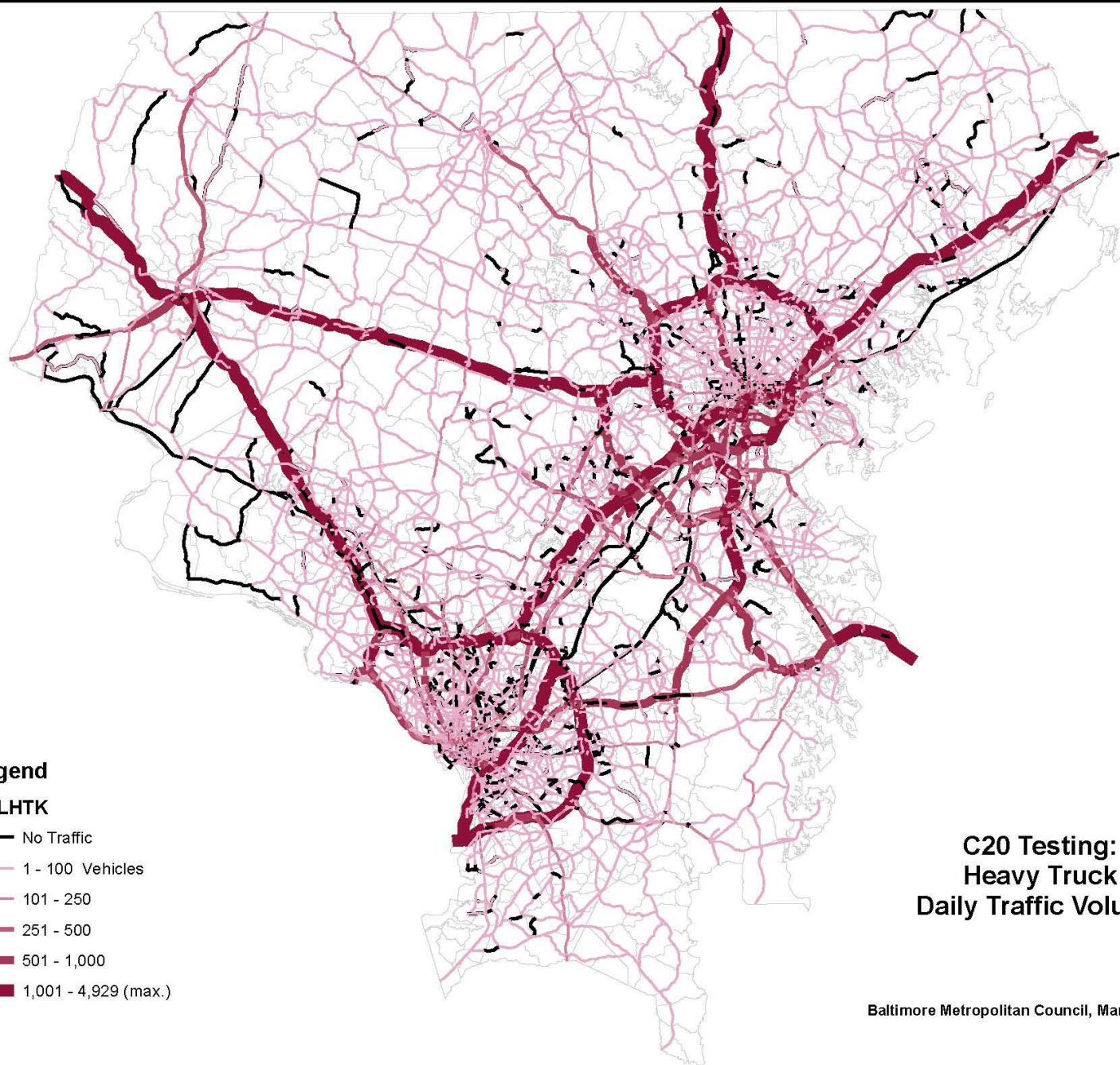
Legend

VOLHTK

- No Traffic
- 1 - 100 Vehicles
- 101 - 250
- 251 - 500
- 501 - 1,000
- 1,001 - 4,929 (max.)

**C20 Testing:
Heavy Truck
Daily Traffic Volume**

Baltimore Metropolitan Council, March 2018



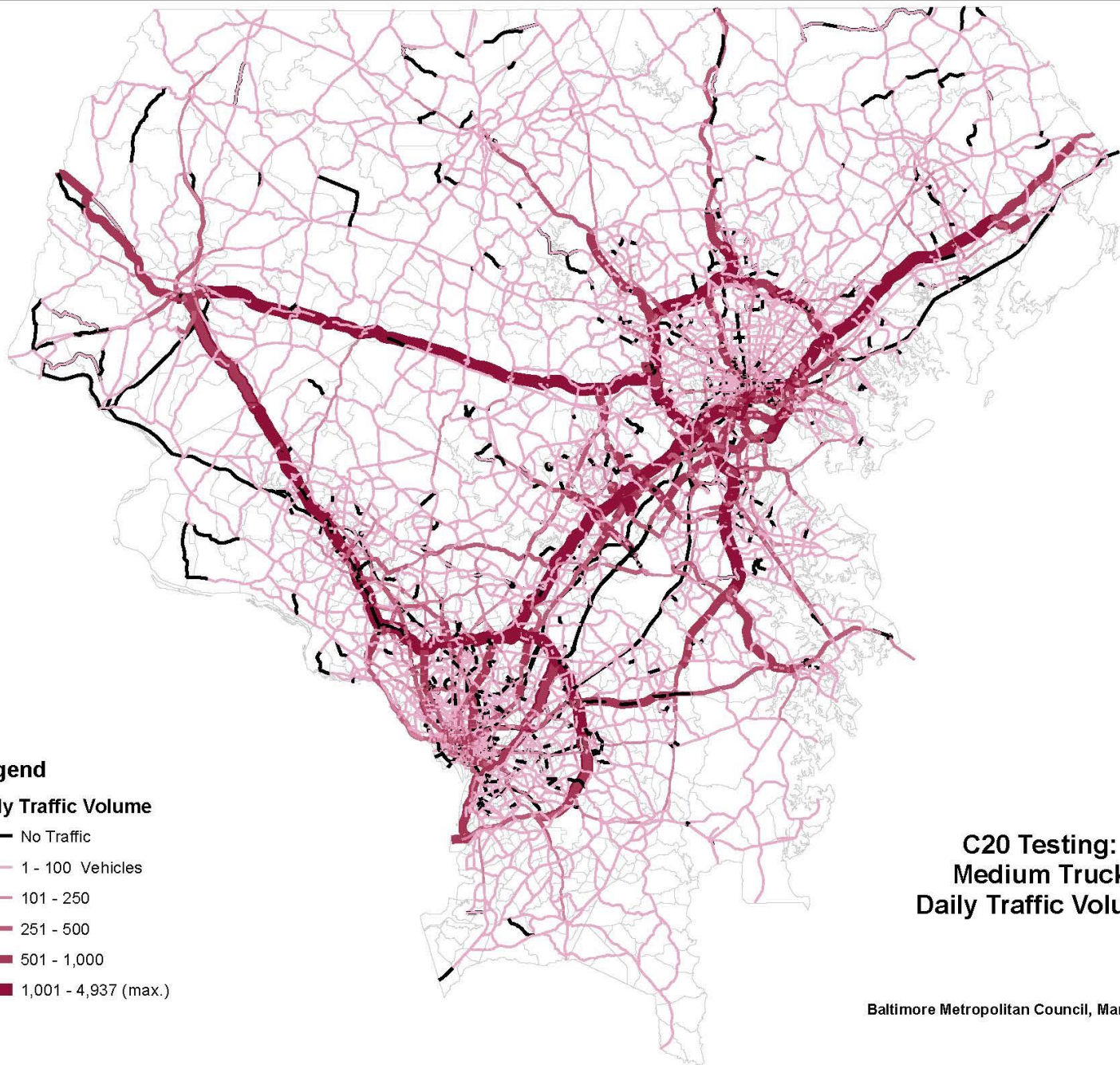
Legend

Daily Traffic Volume

- No Traffic
- 1 - 100 Vehicles
- 101 - 250
- 251 - 500
- 501 - 1,000
- 1,001 - 4,937 (max.)

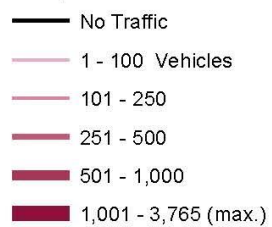
**C20 Testing:
Medium Truck
Daily Traffic Volume**

Baltimore Metropolitan Council, March 2018



Legend

Daily Traffic Volume



C20 Testing: Commercial Vehicle Daily Traffic Volume

Baltimore Metropolitan Council, March 2018

Freight Modeling System Dashboard

Base (2012) Dashboard:

D:\FreightSystem\bmc_model_v0.1.7\scenarios\base\outputs\ReportDashboardBMCCounty.html

2040 Dashboard:

D:\FreightSystem\bmc_model_v0.1.7\scenarios\2040\outputs\ReportDashboardBMCCounty.html



Baltimore Metropolitan Council



Implementation

- **Passenger Model / Freight Modeling System Integration**
 - Replace 2001 Truck Model in BMC Travel Demand Model with 2017 Freight Modeling System
- **Validation/Scenario Testing**
 - Continue testing and comparing to 2001 Truck Model outputs
 - Develop a traffic count collection plan
 - Develop scenarios to test the 2017 Freight Modeling System including:
 - Brownfield Redevelopment
 - Port of Baltimore expansion
 - Other Applications?



Web Sites/Contact Information

BMC's website:

www.baltometro.org

SHA's website:

www.roads.maryland.gov

Agency Contacts

BMC

Brian Ryder

bryder@baltometro.org

MD SHA

Subrat Mahapatra

smahapatra@sha.state.md.us

Consultant Team

RSG

Colin Smith

Colin.Smith@rsginc.com



Baltimore Metropolitan Council

